

HCB SINGLE ENDED BEAM LOAD CELL



DESCRIPTION:

The HCB is a high performance stainless steel beam type load cell. An integral mounting step removes the need for spacer plates and ensures optimum "bolt down" conditions.

This product is suitable for small and medium platform scales, hybrid scales, pallet weighers and process weighing.

The fully welded construction and waterblock cable-entry ensure that this product can be used successfully in harsh environments found in the food, chemical and allied process industries.

This product meets the stringent Weights and Measures requirements throughout Europe.

FEATURES:

- Low profile, stainless steel construction
- Hermetically sealed, IP66 and IP68
- Certified to OIML R-60, **4000d**
- **1000Ω** bridge impedance
- ATEX certified versions are available for use in potentially explosive atmospheres
- Current calibration output (SC version) ensures easy and accurate parallel connection of multiple load cells
- Integral mounting step
- **CAPACITIES: 250 → 5000 kg**

HCB: SPECIFICATIONS

Standard Capacities (=E _{max})	Kg	250, 500, 1000, 2000, 5000				
Accuracy Class According to OIML R-60			C2	C3	C4	C3MI6 ²
Max. Number of Verification Intervals (n _{ic})			2000	3000	4000	3000
Minimum Verification Interval (v _{min})			E _{max} /7000	E _{max} /10000	E _{max} /13500 ³	E _{max} /15000
MDLOR (Z=E _{max} / 2*DR)			--	--	--	6000
Minimum Verification Interval type MR ²				E _{max} /20000	E _{max} /20000	--
Accuracy According to Type Designation		CC	C2	C3	C4	C3MI6
Combined Error	%S	≤± 0.0500	≤± 0.0230	≤± 0.0200	≤± 0.0170	≤± 0.0200
Non-Repeatability	%S	≤± 0.0200	≤± 0.0100	≤± 0.0100	≤± 0.0090	≤± 0.0100
Minimum Dead Load Output Return ¹	%S	≤± 0.0500	≤± 0.0250	≤± 0.0167	≤± 0.0125	≤± 0.0083
Creep Error (30 Minutes) ¹	%S	≤± 0.0600	≤± 0.0245	≤± 0.0245	≤± 0.0184	≤± 0.0245
Creep Error (20-30 Minutes) ¹	%S	≤± 0.0200	≤± 0.0053	≤± 0.0053	≤± 0.0039	≤± 0.0053
Temp. Effect on Min. Dead Load Output	%S/5°C	≤± 0.0250	≤± 0.0100	≤± 0.0070	≤± 0.0050	≤± 0.0070
Temp. Effect on Min. Dead Load Output MR ²	%S/5°C			≤± 0.0035	≤± 0.0035	≤± 0.0035
Temp. Effect on Sensitivity	%S/5°C	≤± 0.0250	≤± 0.0045	≤± 0.0045	≤± 0.0035	≤± 0.0045
Minimum Dead Load	%E _{max}	0				
Maximum Safe Over Load	%E _{max}	150				
Ultimate Over Load	%E _{max}	300				
Maximum Safe Side Load	%E _{max}	100				
Deflection at E _{max}	mm	0.25/ 0.20/ 0.22/ 0.25/ 1.0				
Excitation Voltage	V	5...12				
Maximum Excitation Voltage	V	15				
Rated Output (=S)	mV/V	2				
Tolerance on Rated Output	mV/V	±0.02				
Zero Balance	%S	≤± 1.0				
Input Resistance	Ω	1000 ± 10				
Output Resistance	Ω	1000 ± 10				
Insulation Resistance	MΩ	≥ 5000				
Compensated Temperature Range	°C	-10...+40				
Operating Temperature Range	°C	-40...+80				
Storage Temperature Range	°C	-40...+90				
Element Material (DIN)		Stainless Steel 1.4542				
Sealing (DIN 40.050 / EN 60.529)		IP66 and IP68				
SC-Version (Current Calibration)		Standard				
Recommended Torque on Fixation Bolts	Nm	50 – 75 (550 for 5t version)				
ATEX opt. for potent. explosive atmospheres		II1G EEx ia IIC T4/T6, II2D				

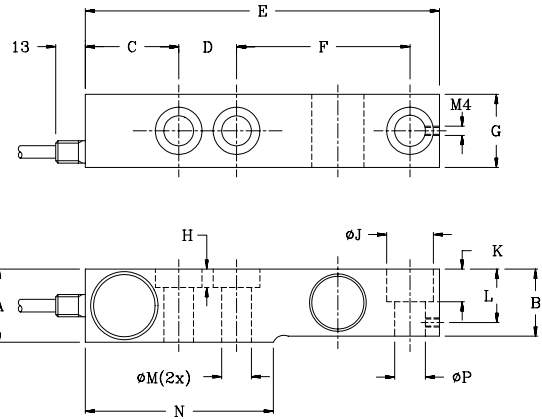
1 Applies for the temperature range -10 to +40 °C

2 Not applicable for 5t version

3 12500 for 5t version

"SC-Version" The "Rated Output" and the "Output Resistance" are balanced in such a way, that the output current is calibrated to within 0.05% of a reference value. This allows an easy parallel connection of load cells. Accuracy classes C2, C3, C4, C3MR and C4MR are in agreement with the OIML recommendation R-60. The correct mounting of the load cells is essential to ensure optimum performance.

Further information is available on request.



Cable specifications:

Cable length	3m
Excitation +	Green
Excitation -	Black
Output +	White
Output -	Red
Sense +	Yellow
Sense -	Blue
Screen	Orange

Six-wire standard, four wire optional. Cable screen is not connected to load cell body.

Capacity	250	500	1000	2000	5000
A	31.8	31.80	31.80	35.80	44.0
B	25.2	26.10	29.15	34.00	40.0
C	41.0	41.0	41.0	41.0	19.1
D	25.4	25.4	25.4	25.4	38.1
E	155.5	155.5	155.5	155.5	172.0
F	76.2	76.2	76.2	76.2	95.3
G	31.8	31.8	31.8	31.8	38.0
H	8.0(2x)	8.0(2x)	8.0(2x)	8.0(2x)	--
J	20.5(3x)	20.5(3x)	20.5(3x)	20.5(3x)	30.2
K	13.2	14.2	14.2	14.2	20.0
L	23.2	23.2	23.2	23.2	30.0
M	13.0	13.0	13.0	13.0	20.5
N	82.6	82.6	82.6	82.6	76.2
P	13.5	13.5	13.5	13.5	17.5

Attention:

Dimensions: mm.

All dimension tolerances according to ISO 2768m, otherwise specified.

All specifications subject to change without notice

4/9/57/04 E

INTERTECHNOLOGY
INC.

19 Waterman Ave, Toronto, Ont. M4B1Y2
Ph#416-445-5500 Fax#416-445-1170
Toll Free:1-800-465-1600
Email:sales@intertechnology.com
Website:www.intertechnology.com