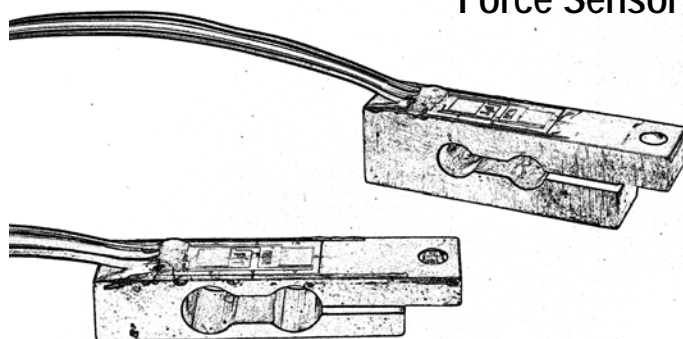


Model FT40

Force Sensor

- Compact size
- Half bridge design reduces the number of interconnecting wires
- Bonded foil strain gauge design provides high reliability
- Integral overload protection

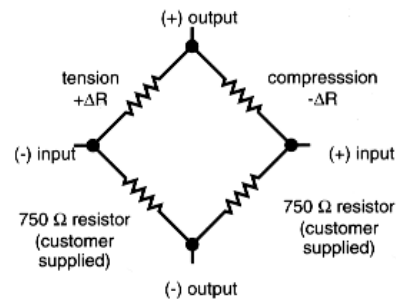
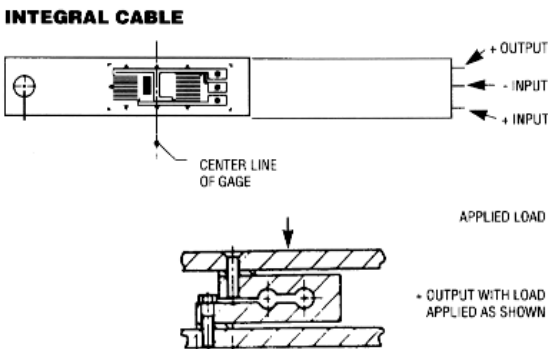
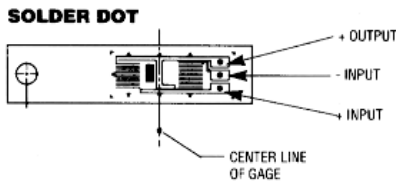
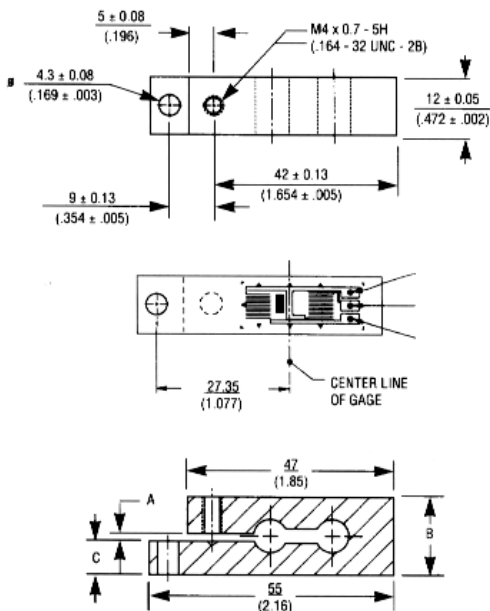


specifications

Capacity (lb)	1.0, 5.0, 10.0, 20.0, 50.0	Hysteresis (% Rated Output)	±0.1
Excitation Voltage (Vdc or Vac _{rms})	10 recommended, 15 max.	Nonrepeatability (% Rated Output)	±0.05
Bridge Configuration	Active half bridge, adjacent arms	Temp. Coef.: Output (%FS/°F: 15° to 115°F)	±0.035
Resistance: Gage	750±75Ω	Temp. Zero.: Output (%FS/°F: 15° to 115°F)	±0.006
Resistance: Insulation (meg-ohm)	1000 min. @ 50Vdc	Temperature Range: Storage	-58 to 194°F
Resistance: Match	0.5 or 5.0 or 25.0Ω	Temperature Range: Operating	-58 to 194°F
Nonlinearity (% Rated Output)	±0.1	Maximum Overload (% Rated Capacity)	200
Creep (% Load/5 min.)	0.10	Fatigue Life (Cycles Unidirectional)	>10 ⁶

Dimensions in millimeters (inches).

NOTE: Specifications subject to change. Request certified drawings prior to designing mountings or fixtures.



Circuit Diagram

Electrical Termination:
Two basic termination options are offered: 3 solder dots or integral leads. Sensors are configured as a fully-active half bridge. The two strain gages are matched within 0.5 ohms or 5.0 ohms based on model selected.

Capacity	A	B	C	Deflection Max.
1 kg	2.36 (0.093)	11±0.5 (0.433±0.02)	4.3±0.5 (0.171±0.02)	0.5 (0.02)
5 kg	1.5 (0.059)	11±0.5 (0.433±0.02)	5.0±0.3 (0.20±0.012)	0.25 (0.01)
10 kg	1.5 (0.059)	16±0.25 (0.630±0.01)	7.0±0.5 (0.28±0.02)	0.3 (0.012)
20 kg	1.5 (0.059)	16±0.25 (0.630±0.01)	7.0±0.5 (0.28±0.02)	0.25 (0.01)
50 kg	1.5 (0.059)	16±0.25 (0.630±0.01)	7.0±0.5 (0.28±0.02)	0.2 (0.008)

Wiring

+ Input	Red
- Input	Black
+ Output	White



19 Waterman Ave, Toronto, Ont. M4B1Y2
Ph#416-445-5500 Fax#416-445-1170
Toll Free: 1-800-465-1600
Email: sales@intertechnology.com
Website: www.intertechnology.com

