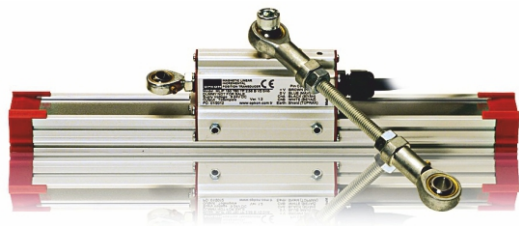


Magnetic Linear Encoder

MLIP

Sense the motion



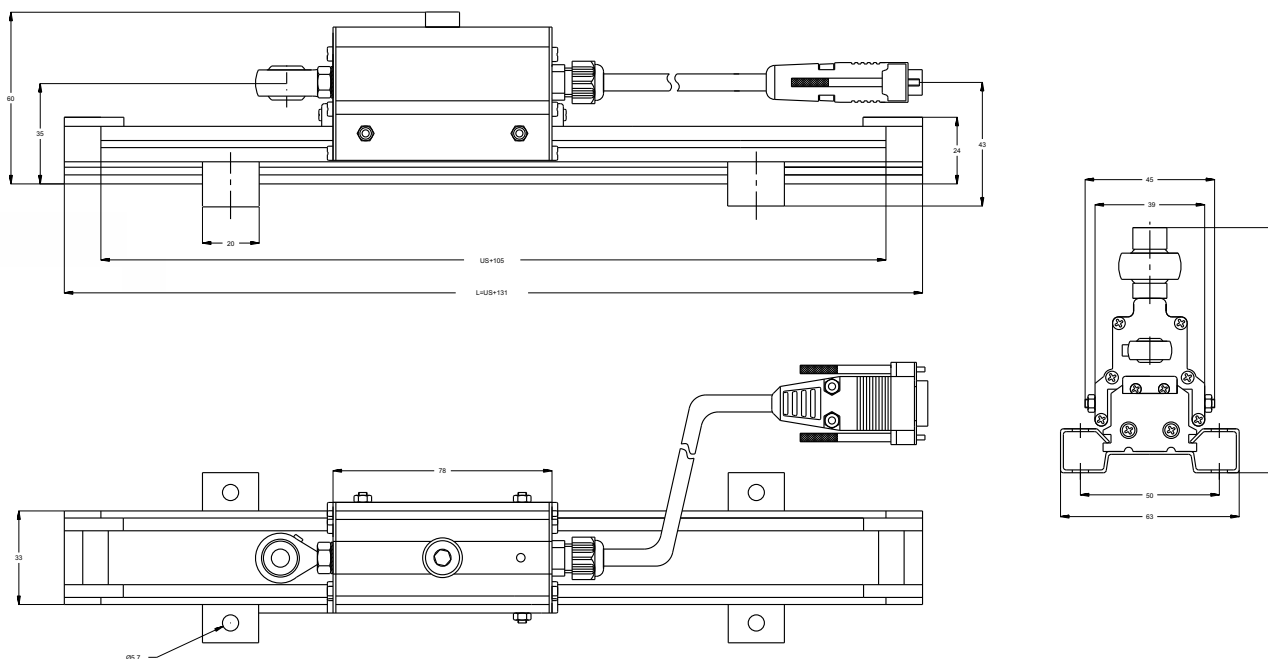
- 10, 20, 40, 50, 80, 100 mikron Resolution;
- Up to 20 meter measurement;
- Totempole, TTL Linedriver, HTL Linedriver outputs;
- IP 66 protection
- Magnetic contactless system

Main Applications

Metal Cutting/ Forming Machineries, Marble/ Stone Machineries, Wood Processing Machineries and General Automation Applications

Specifications

Type of measurement	Magnetic incremental contactless
Measurement strokes	50mm – 20.000mm (customised extensions up to 20.000mm)
Resolution	0.02mm (20 micron), 0.08mm (80 micron), 0.1mm (100 micron)
Accuracy	± 0.04mm (±40 micron)
Output signals	A, B – AA', BB' – A,B,Z –AA',BB',ZZ'
Output signal type	TTL, Totempole (Push-Pull), HLD or Line Driver
Supply voltage	8-24 VDC (Standard), 5 VDC (Optional), or 5-30V DC (Optional)
Case material	Anodized aluminium/ plastic
Max. speed	3 m/s
Working temperature	-20 °C + 80 °C
Protection	IP 66
Electrical connection	2.5m Cable (Standard) or DB9 Connector (Optional)



Ordering Procedure

MLIP	A	1500	T80	TP	B	V2	2.5m
<i>Model</i>	<i>Mechanical Connection</i>	<i>Measurement stroke</i>	<i>Resolution</i>	<i>Output type</i>	<i>Output signal</i>	<i>Supply voltage</i>	<i>Connection</i>
	A: Mechanical connection on the side B: Mechanical connection on upper part (Standard) C: Mechanical connection both on the side and upper part	50-20.000mm	20 micron 50 micron 80 micron 100 micron	TP = Totempole TT: TTL LD: Line Driver HLD: High Line Driver	B: A, B (standard) Z*: A, B, Z (for LD and HLD, B and Z are with their inverses)	V1: 5V DC (for TT or LD) V2: 8-24V DC (for TP) V3: 8-30V DC (for HLD)	2M5: 2,5 meter cable (Standard) 9K: 0,5 meter cable with DB9 connector

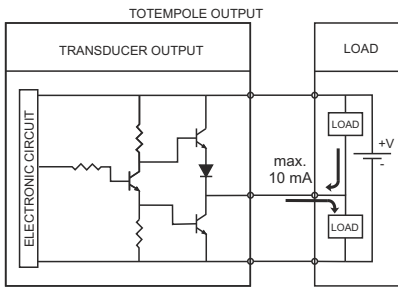
Z*: Z appoints reference point

1Z: Single reference located at ball joint edge of the measurement stroke

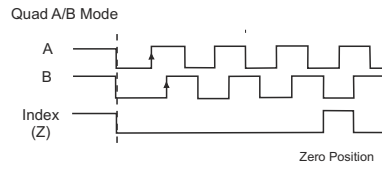
2Z: Single reference located at cable edge of the measurement stroke

3Z: Single reference located in the middle of the measurement stroke

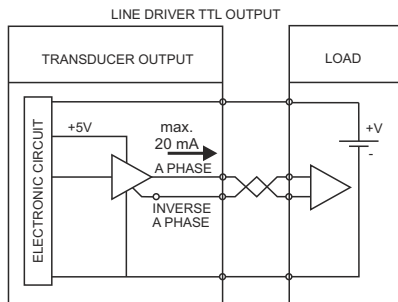
Sense the motion



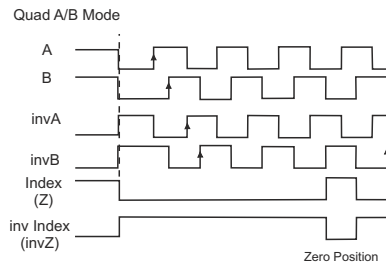
Supply Voltage : 8-24 VDC
Output Current : max. 10 mA



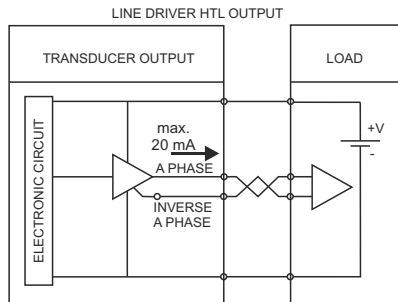
Totem Pole
Ch A : Black
Ch B : White
+24V : Brown
GND : Blue
NC : Red
Earth: Shield



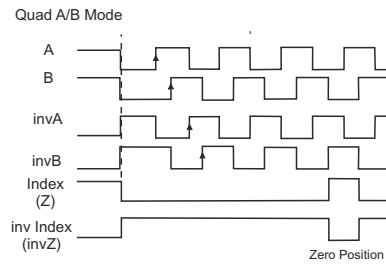
Supply Voltage : 5 VDC or 8-24 VDC
Output Voltage : 5 VDC



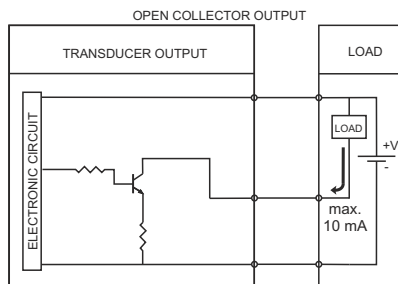
LD
Ch A : Black
Ch A' : Yellow
Ch B : White
Ch B' : Green
+V : Brown
GND : Blue
Earth : Shield



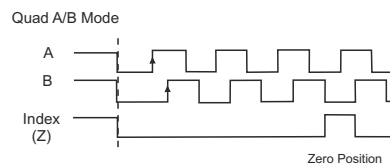
Supply Voltage : 8-24 VDC
Output Voltage : Supply Voltage



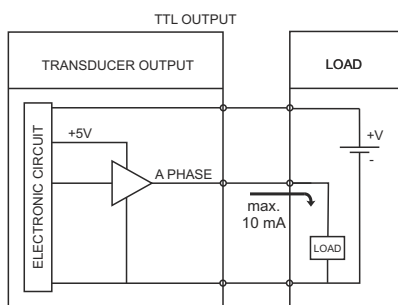
HLD
Ch A : Black
Ch A' : Yellow
Ch B : White
Ch B' : Green
+V : Brown
GND : Blue
Earth : Shield



Supply Voltage : 8-24 VDC or 5 VDC
Output Current : max. 10 mA



LD and HLD with Z
Ch A : Black
Ch A' : Yellow
Ch B : White
Ch B' : Green
Ch Z : Orange
Ch Z' : Red
+V : Brown
GND : Blue
Earth : Shield



Supply Voltage : 5 VDC or 8-24 VDC
Output Voltage : 5 VDC

