

For All PT9000 & PT9000 Extended Range Series
(some exceptions apply, see below)

Designed for extreme applications where exceptional amounts of dirt, spray or some other foreign matter may enter through the standard PT9000 'slot opening' and interfere with the cable reel mechanism. The RBS9000 reduces the cable opening down to a single-point exit to block most debris from entering the cable-reel area.

Because some debris may get drawn into the transducer by the measuring cable upon retraction, we've added two integral brushes to help wipe away any matter that might be clinging to it.

RBS9000

Extra Protection against Extraordinarily Dirty Environments

Reduces the cable-exit opening down to a single point to prevent excess debris from entering the spool cavity

RBS option uses two sets of cable brushes to help clean the measuring cable before it is retracted into the enclosure

Ordering Information

The appropriate PT9000 Series transducer can be selected from any model in PT9000 and PT9000 Extended Range Series. VLS is used as a prefix for all VLS model designations.

Ordering Example:



creating RBS model number (example):

PT9101-0600-111-1110 select **PT9000** model

~~9101-0600-111-1110~~ remove "PT"

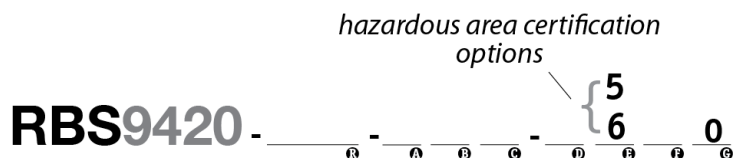
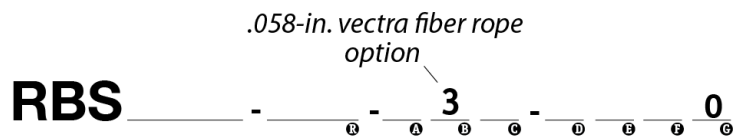
RBS + 9101-0600-111-1110 add "RBS"

RBS9101-0600-111-1110 completed model number

Exceptions**

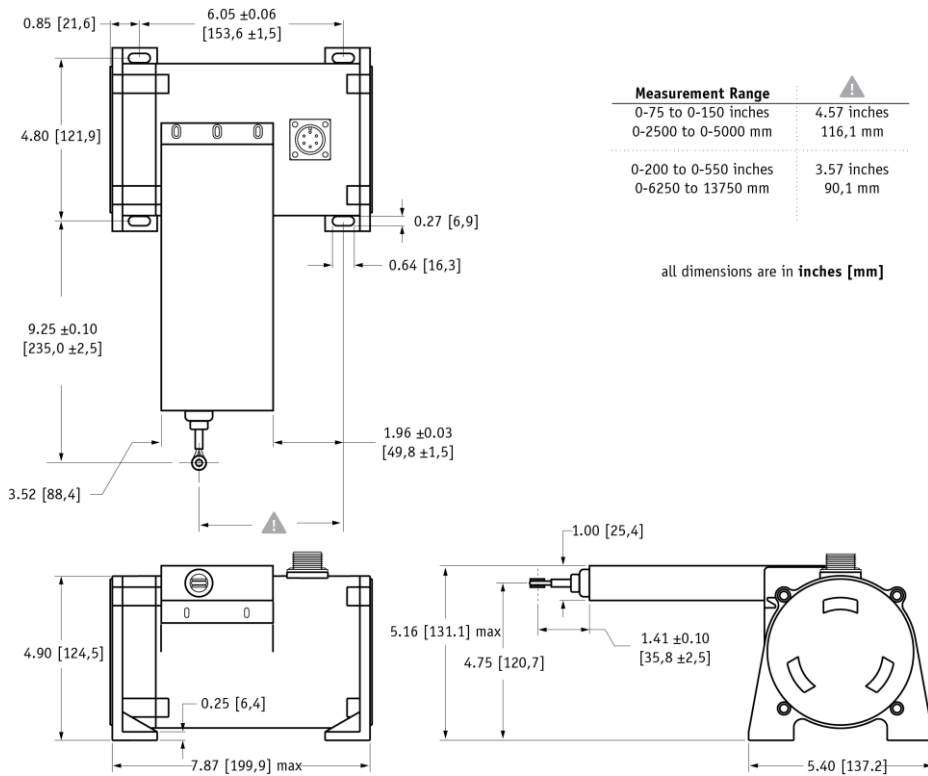
Please note that while the RBS option is available for most PT9000 model numbers, exceptions include the .058-inch dia. vectra fiber rope option (all models) and hazardous area intrinsically safe output signal option of the PT9420.

Exceptions Example:

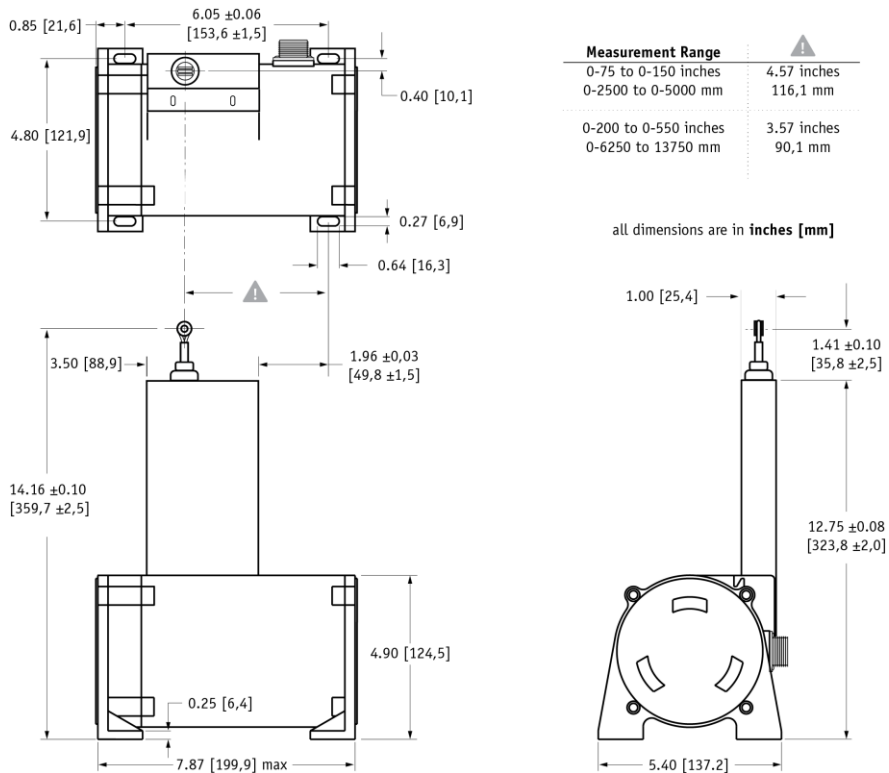


**note: for options or models not available, please contact factory.

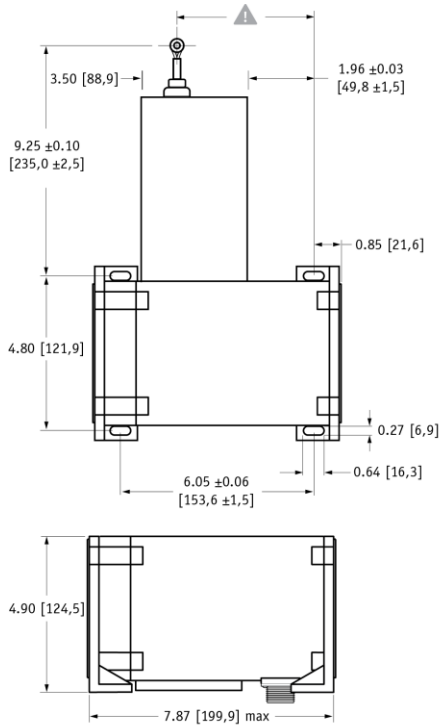
Front Cable Exit Option



Top Cable Exit Option

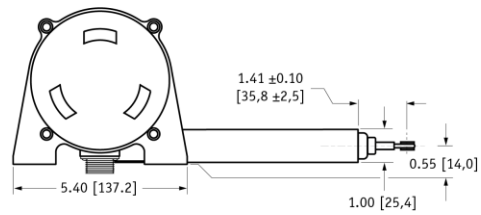


Rear Cable Exit Option

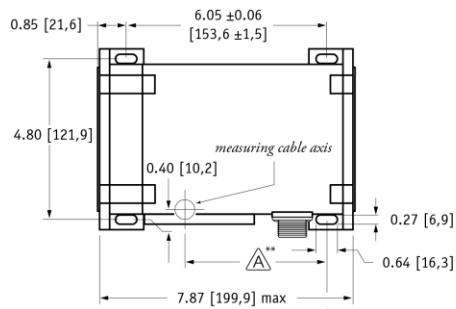


Measurement Range	
0-75 to 0-150 inches 0-2500 to 0-5000 mm	4.57 inches 116,1 mm
0-200 to 0-550 inches 0-6250 to 13750 mm	3.57 inches 90,1 mm

all dimensions are in inches [mm]



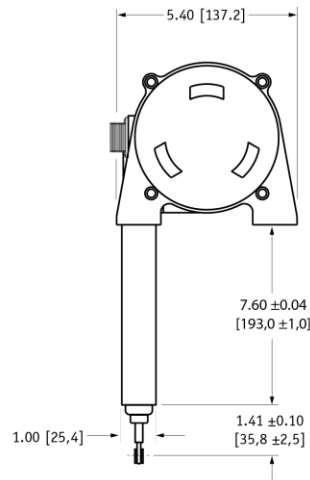
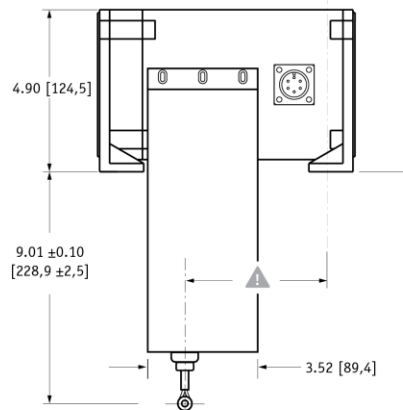
Bottom Cable Exit Option



**Note: see "A" dimension on PT9000 outline drawing

Measurement Range	
0-75 to 0-150 inches 0-2500 to 0-5000 mm	4.57 inches 116,1 mm
0-200 to 0-550 inches 0-6250 to 13750 mm	3.57 inches 90,1 mm

all dimensions are in inches [mm]





19 Waterman Ave. Toronto, Ont. M4B1Y2
Tel: 416-445-5500 Fax: 416-445-1170
Toll Free: 1-800-465-1600
Email: sales@intertechnology.com
Website: www.intertechnology.com

TE.com/sensorsolutions

Measurement Specialties, Inc., a TE Connectivity company.

Measurement Specialties, TE Connectivity, TE Connectivity (logo) and EVERY CONNECTION COUNTS are trademarks. All other logos, products and/or company names referred to herein might be trademarks of their respective owners.

The information given herein, including drawings, illustrations and schematics which are intended for illustration purposes only, is believed to be reliable. However, TE Connectivity makes no warranties as to its accuracy or completeness and disclaims any liability in connection with its use. TE Connectivity's obligations shall only be as set forth in TE Connectivity's Standard Terms and Conditions of Sale for this product and in no case will TE Connectivity be liable for any incidental, indirect or consequential damages arising out of the sale, resale, use or misuse of the product. Users of TE Connectivity products should make their own evaluation to determine the suitability of each such product for the specific application.

© 2015 TE Connectivity Ltd. family of companies All Rights Reserved.

RBS9000 12/01/2015