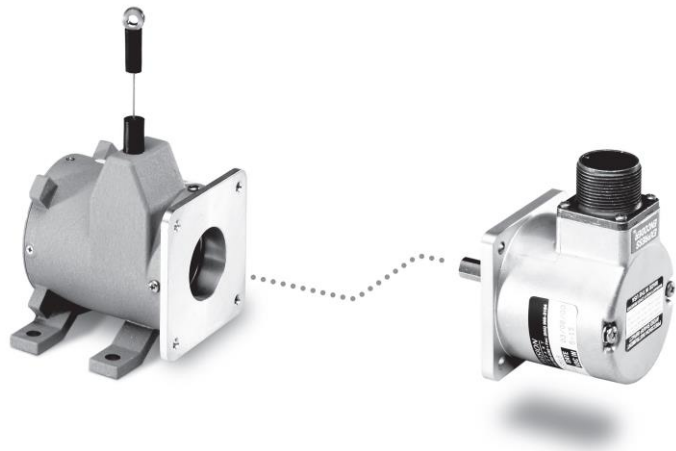


Our unique linear-to-rotational, industrial-grade string encoder module mates to virtually any encoder giving you a cost-effective linear position measurement solution that precisely fits your requirements. The PT8600 takes just minutes to install, fits easily into tight areas and does not require perfectly parallel alignment. To order, simply select the stroke range, the cable tension and the mounting style that matches your encoder.

If you want us to provide the encoder or you don't see the mounting style you need, please give us a call.

## PT8600 String Encoder

**Converts ANY Rotary Encoder to a Linear Position Sensor**  
**Linear Stroke Range up to 50 inches (1250 mm)**  
**Mates Virtually ANY Customer Supplied Encoder**  
**Factory Supplied Encoder Available**



### Full Stroke Range Options

**English Ranges** 0-25, 0-50 in.  
**Metric Ranges** 0-625, 0-1250 mm

### Motion Conversion Ratio

**English Ranges** 5 inches per turn, see ordering information  
**Metric Ranges** 125 mm per turn, see ordering information

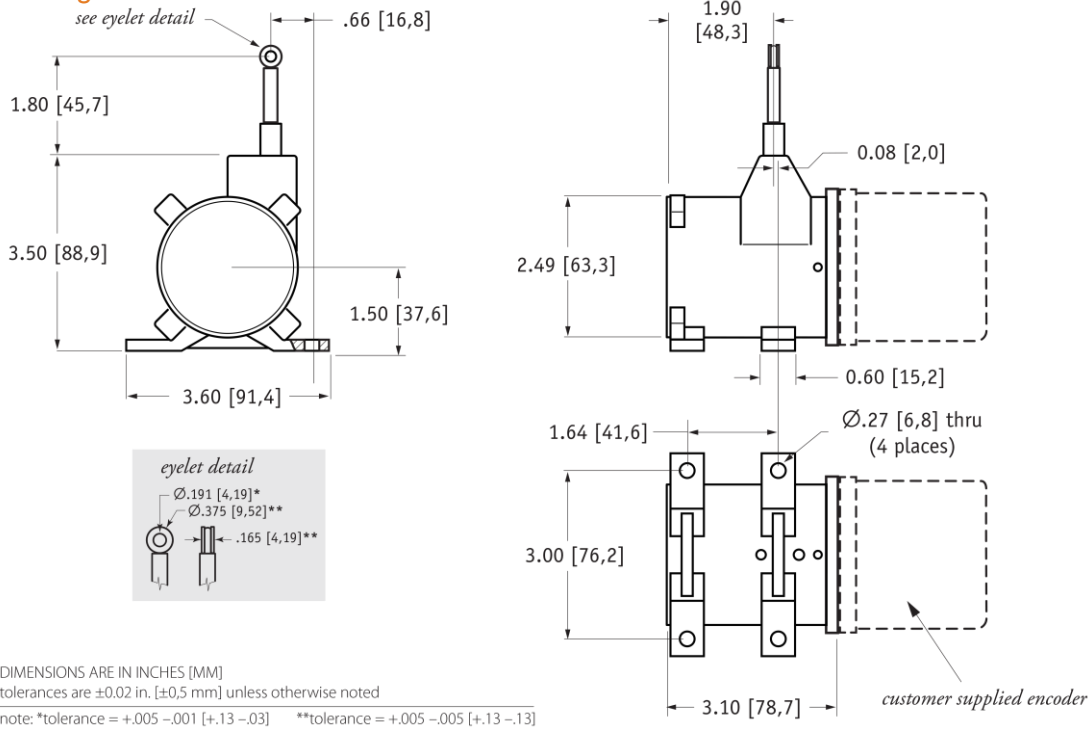
### General

**Accuracy**  $\pm 0.04\%$  full stroke, contact factory for better accuracy  
**Measuring Cable Options** see ordering information  
**Module Material** powder-painted aluminum  
**Maximum Allowable Rotational Sensor Torque** 1.0 in-lbs.  
**Weight** 3 lbs. max.

### Environmental

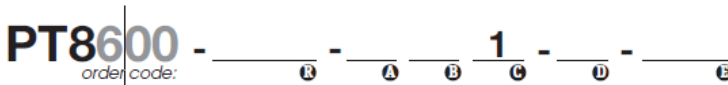
**Operating Temperature** -40° to 200°F (-40° to 90°C)

**Outline Drawing**



**Ordering Information**

**Model Number:**



**Sample Model Number:**

**PT8600 - 0025 - 111 - BR - F01**

- R** range: 25 inches
- A** measuring cable tension: standard (12 oz.)
- B** measuring cable: .034 nylon-coated stainless cable brush
- D** cable guide option: cable brush
- E** rotational sensor mounting style: F01 (2.5-in. sq. flange)

» Trying to reorder but can't find your existing model number? Please contact factory for help.

**Full Stroke Range:**

| <b>R</b> order code:    | <b>0025</b> | <b>0050</b> | <b>0625</b> | <b>1250</b> |
|-------------------------|-------------|-------------|-------------|-------------|
| full stroke range, min: | 25 in.      | 50 in.      | 625 mm      | 1250 mm     |

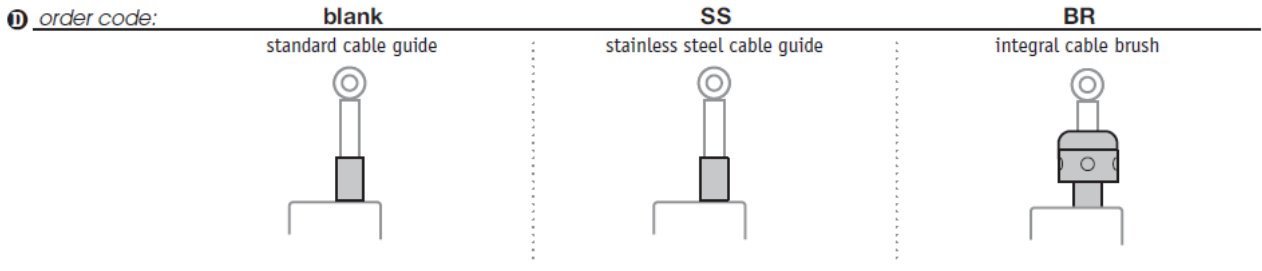
**Measuring Cable Tension:**

| <b>A</b> order code: | <b>1</b>                       | <b>2</b>                        |
|----------------------|--------------------------------|---------------------------------|
| cable tension (±50%) | standard tension               | high tension                    |
| 25, 50-inch ranges:  | 17 oz. [5 g max. acceleration] | 50 oz. [15 g max. acceleration] |
| 625, 1250-mm ranges: | 4,2 N [8 g max. acceleration]  | 13,9 N [30 g max. acceleration] |

**Measuring Cable:**

| <b>B</b> order code: | <b>1</b>                                     | <b>2</b>                             | <b>4</b>                             |
|----------------------|--|--------------------------------------|--------------------------------------|
| cable construction:  | Ø.034-inch nylon-coated stainless steel rope | Ø.047-inch bare stainless steel rope | Ø.031-inch bare stainless steel rope |
| available ranges:    | all ranges                                   | 25 inch & 625 mm only                | 50 inch & 1250 mm only               |
| general use:         | indoor                                       | outdoor, debris, high temperature    | outdoor, debris, high temperature    |
| conversion ratio {   | english ranges:                              | 1 turn = 5.000 ± 0.0094 in.          | 1 turn = 4.990 ± 0.0094 in.          |
|                      | metric ranges:                               | 1 turn = 125,001 ± 0,2394 mm         | 1 turn = 124,762 ± 0,2394 mm         |

**Cable Guide Options:**

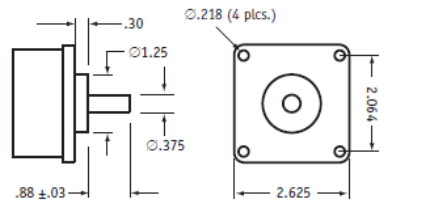


**Rotational Sensor Mounting Style:**

| ② order code: | F01                                    | F02                                  | S01  | S02   | S04   |
|---------------|--|--------------------------------------|--|---|---|
|               | 2.5-in. Flange Mount<br>3/8-inch shaft | 2-in. Flange Mount<br>3/8-inch shaft | Face-Mount<br>6 mm shaft<br>M4 mounting screws | Face-Mount<br>10 mm shaft<br>M4 mounting screws | Face-Mount<br>10 mm shaft<br>M3 mounting screws |

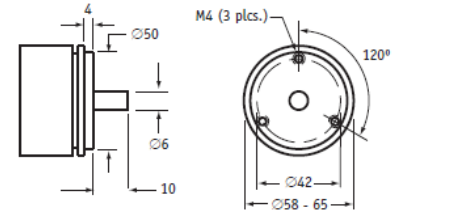
*Note: If you don't see your encoder style, please contact factory. All encoder types supported.*

**F01 - 2½-inch Sq. Flange Mount (3/8-inch shaft)**



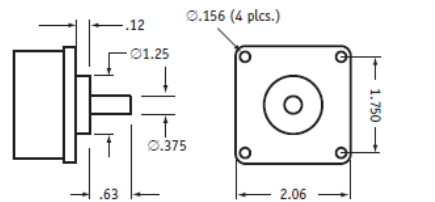
*all dimensions are in inches*

**S01 - Face-Mount (6mm shaft/M4 screws)**



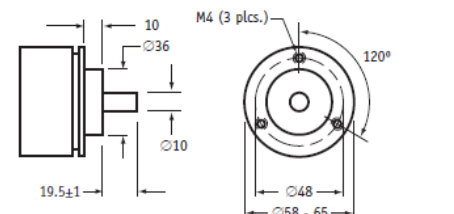
*all dimensions are in mm*

**F02 - 2-inch Sq. Flange Mount (3/8-inch shaft)**



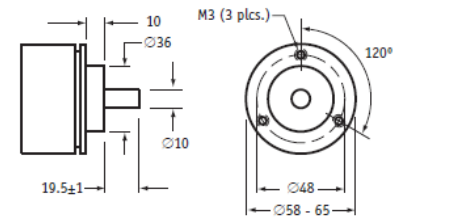
*all dimensions are in inches*

**S02 - Face-Mount (10mm shaft/M4 screws)**



*all dimensions are in mm*

**S04 - Face-Mount (10mm shaft/M3 screws)**



*all dimensions are in mm*

## PT8600

String Encoder

---



**19 Waterman Ave. Toronto, Ont. M4B1Y2**  
**Tel: 416-445-5500 Fax: 416-445-1170**  
**Toll Free: 1-800-465-1600**  
**Email: [sales@intertechnology.com](mailto:sales@intertechnology.com)**  
**Website: [www.intertechnology.com](http://www.intertechnology.com)**

### [TE.com/sensorsolutions](http://TE.com/sensorsolutions)

Measurement Specialties, Inc., a TE Connectivity company.

Measurement Specialties, TE Connectivity, TE Connectivity (logo) and EVERY CONNECTION COUNTS are trademarks. All other logos, products and/or company names referred to herein might be trademarks of their respective owners.

The information given herein, including drawings, illustrations and schematics which are intended for illustration purposes only, is believed to be reliable. However, TE Connectivity makes no warranties as to its accuracy or completeness and disclaims any liability in connection with its use. TE Connectivity's obligations shall only be as set forth in TE Connectivity's Standard Terms and Conditions of Sale for this product and in no case will TE Connectivity be liable for any incidental, indirect or consequential damages arising out of the sale, resale, use or misuse of the product. Users of TE Connectivity products should make their own evaluation to determine the suitability of each such product for the specific application.

© 2015 TE Connectivity Ltd. family of companies All Rights Reserved.

PT8600 12/01/2015